

Open End Rivets

Non-structural blind breakstem rivet designed for a wide range of applications. Available in a variety of materials and combinations.



Key features and benefits

- Cost effective standard rivet
- Installed quickly and easily
- Design of the stem head ensures positive retention after installation

Specifications

Sizes:

3/32" – 1/4"

(2.4 mm – 6.4 mm)

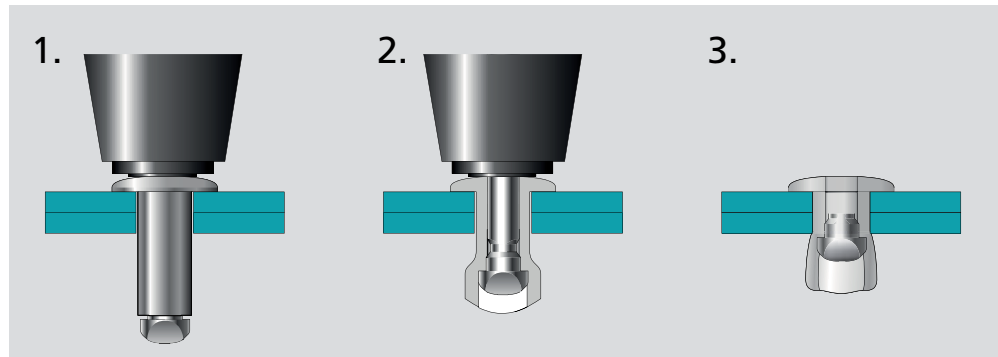
Materials:

Aluminum, Steel,
Stainless Steel, Copper,
Nickel Copper Alloy

Head Styles:

Dome, Large Flange,
Countersunk

Typical placing sequence



Please visit our website for fastener placing animations and technical data.

Assembly applications

- White goods
- Automotive
- Building & construction
- Furniture
- Lighting
- Hearth, grill
- Patio furniture
- Renewable energies

Automotive



White goods



Snowmobile trailer



Lighting equipment



Conference room furnishings



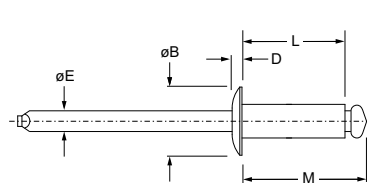
Gutter





English	Français	Deutsch	Italiano	Español
Body: Steel* Zinc plated	Corps: Acier* Revêtement zingué	Hülse: Stahl* Verzinkt	Corpo: Acciaio* Zincato	Cuerpo: Acero* Zincado
Stem: Steel Protective coating	Tige: Acier Revêtement de protection	Dorn: Stahl Schutzüberzug	Gambo: Acciaio Rivestimento protettivo	Vástago: Acero Revestimiento preservador

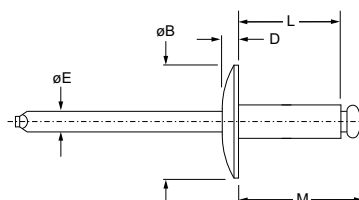
*: C1006-C1010



SD ■ BS

Dome head

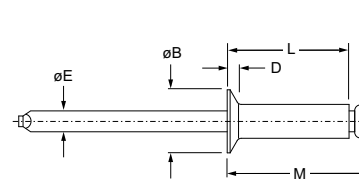
Tête bombée / Flachrundkopf /
Testa tonda / Cabeza alomada



SD ■ BS LF

Large flange

Tête large / Flachrundkopf, extragroß /
Testa larga / Cabeza ancha



SK ■ BS

Countersunk

Tête fraisée / Senkkopf /
Testa svasata / Cabeza avellanada

Ø nom.	min.		max.		L ref.	M ref.	ØE ref.	SD ■ BS			SD ■ BS LF			SK ■ BS		
								ØB max.	D max.	Part No.	ØB max.	D max.	Part No.	ØB max.	D max.	Part No.
3/32" (2.4)	.032 ¹⁾ (0.8) ¹⁾	.125 (3.2)	.097 (2.46)	.100 (2.54)	.225 (5.7)	.325 (8.3)	.057 (1.5)	.198 (5.1)	.032 (0.9)	32				.187 (4.8)	.039 (1.0)	32
	.126 (3.2)	.250 (6.4)			.350 (8.9)	.450 (11.4)				34						
1/8" (3.2)	.032 (0.8)	.062 (1.6)			.188 (4.8)	.308 (7.8)				41						
	.063 (1.6)	.125 (3.2)			.250 (6.4)	.370 (9.4)				42			42			42
	.126 (3.2)	.187 (4.8)			.313 (8.0)	.433 (11.0)				43			43			43
	.188 (4.8)	.250 (6.4)	.129 (3.28)	.133 (3.38)	.375 (9.5)	.495 (12.6)	.076 (1.9)	.262 (6.7)	.040 (1.1)	44	.390 (10.0)	.046 (1.2)	44	.233 (6.0)	.051 (1.3)	44
	.251 (6.4)	.312 (7.9)			.438 (11.1)	.558 (14.2)				45						
	.313 ²⁾ (7.9) ²⁾	.375 (9.5)			.500 (12.7)	.620 (15.7)				46			46			46
	.376 (9.5)	.500 (12.7)			.625 (15.9)	.745 (18.9)				48						

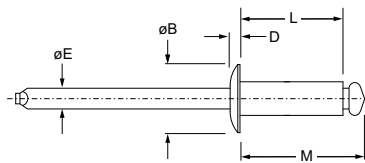
dimensions in inches and (mm) / en pouces et (millimètre) / alle Maße in Zoll und (mm) / in pollici e (millimetri) / en pulgadas y (milímetros)

1) SK 32 BS: .036 (1.6)

2) SD 46 BS LF: .251 (6.4)

Open End SD BS / SK BS Series

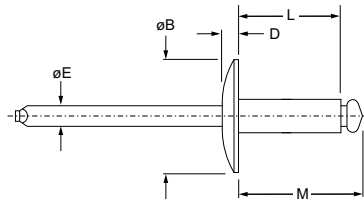
Steel / Steel



SD ■ BS

Dome head

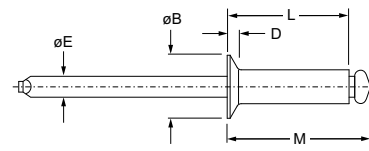
Tête bombée / Flachrundkopf /
Testa tonda / Cabeza alomada



SD ■ BS LF

Large flange

Tête large / Flachrundkopf, extragroß /
Testa larga / Cabeza ancha



SK ■ BS

Countersunk

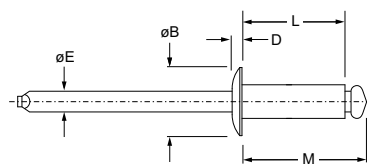
Tête fraisée / Senkkopf /
Testa svasata / Cabeza avellanada

ø nom.	min. max.		min. max.		L ref.	M ref.	øE ref.	SD ■ BS			SD ■ BS LF			SK ■ BS		
	min.	max.	min.	max.				øB max.	D max.	Part No.	øB max.	D max.	Part No.	øB max.	D max.	Part No.
5/32" (4.0)	.063 (1.6)	.125 (3.2)	.160 (4.06)	.164 (4.17)	.275 (7.0)	.415 (10.5)	.095 (2.4)	.328 (8.4)	.047 (1.2)	52	.488 (12.4)	.056 (1.5)	54	.296 (7.6)	.063 (1.6)	54
	.126 (3.2)	.187 (4.8)			.338 (8.6)	.478 (12.1)				53						
	.188 (4.8)	.250 (6.4)			.400 (10.2)	.540 (13.7)				54						
	.251 (6.4)	.375 (9.5)			.525 (13.3)	.665 (16.9)				56						
	.376 (9.5)	.500 (12.7)			.650 (16.5)	.790 (20.1)				58						
3/16" (4.8)	.032 (0.8)	.062 (1.6)	.192 (4.88)	.196 (4.98)	.238 (6.0)	.398 (10.1)	.114 (2.9)	.393 (10.0)	.057 (1.5)		.650 (16.6)	.092 (2.4)	61	.363 (9.3)	.071 (1.8)	
	.063 (1.6)	.125 (3.2)			.300 (7.6)	.460 (11.7)				62			62			62
	.126 (3.2)	.187 (4.8)			.362 (9.2)	.522 (13.3)				63						63
	.188 ³⁾ (4.8) ³⁾	.250 (6.4)			.425 (10.8)	.585 (14.9)				64			64			64
	.251 (6.4)	.375 (9.5)			.550 (14.0)	.710 (18.0)				66			66			66
	.376 (9.5)	.500 (12.7)			.675 (17.2)	.835 (21.2)				68			68			
	.501 (12.7)	.625 (15.9)			.800 (20.3)	.960 (24.4)				610			610			
	.626 (15.9)	.750 (19.1)			.925 (23.5)	1.085 (27.6)				612			612			
	.751 (19.1)	.875 (22.2)			1.050 (26.7)	1.210 (30.7)				614						
	.876 (22.3)	1.000 (25.4)			1.175 (29.8)	1.335 (33.9)				616						

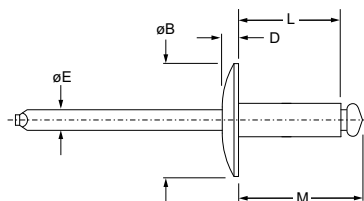
dimensions in inches and (mm) / en pouces et (millimètre) / alle Maße in Zoll und (mm) / in pollici e (millimetri) / en pulgadas y (milímetros)
3) SD 64 BS LF: .126 (3.2)

Open End SD BS / SK BS Series

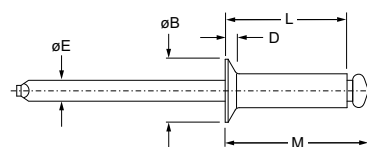
Steel / Steel



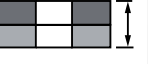

SD ■ BS
Dome head
Tête bombée / Flachrundkopf /
Testa tonda / Cabeza alomada



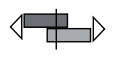

SD ■ BS LF
Large flange
Tête large / Flachrundkopf, extragroß /
Testa larga / Cabeza ancha



SK ■ BS
Countersunk
Tête fraisée / Senkkopf /
Testa svasata / Cabeza avellanada

Ø nom.					L ref.	M ref.	ØE ref.	SD ■ BS			SD ■ BS LF			SK ■ BS		
	min.	max.	min.	max.				ØB max.	D max.	Part No. ■	ØB max.	D max.	Part No. ■	ØB max.	D max.	Part No. ■
1/4" (6.4)	.063 (1.6)	.250 (6.4)	.257 (6.53)	.261 (6.63)	.475 (12.1)	.710 (18.0)	.151 (3.8)	.525 (13.4)	.073 (1.85)	84						
	.251 (6.4)	.375 (9.5)			.600 (15.2)	.835 (21.2)				86						
	.376 (9.5)	.500 (12.7)			.725 (18.4)	.960 (24.4)				88						
	.501 (12.7)	.625 (15.9)			.850 (21.6)	1.085 (27.6)				810						
	.626 (15.9)	.750 (19.1)			.975 (24.8)	1.210 (30.7)				812						
	.751 (19.1)	.875 (22.2)			1.100 (27.9)	1.335 (33.9)				814						
	.876 (22.3)	1.000 (25.4)			1.225 (31.1)	1.460 (37.1)				816						

dimensions in inches and (mm) / en pouces et (millimètre) / alle Maße in Zoll und (mm) / in pollici e (millimetri) / en pulgadas y (milímetros)

Ø		
nom.	lbf (kN) ⁴⁾	lbf (kN) ⁴⁾
3/32" (2.4)	150 (0.67)	205 (0.91)
1/8" (3.2)	295 (1.31)	425 (1.89)
5/32" (4.0)	410 (1.82)	570 (2.54)
3/16" (4.8)	590 (2.62)	815 (3.63)
1/4" (6.4)	1245 (5.54)	1505 (6.69)

4) typical values / valeurs moyennes / typische Werte /
Valori tipici / valores típicos